



# DUBAI, UNITED ARAB EMIRATES

Located on the Arabia Coast of the United Arab Emirates, Dubai is one of the most dynamic and fascinating cities in the world. Dubai has rapidly become the leading tourist hub of the region; with its sunny weather, sandy beaches, and world-class shopping facilities, it attracts millions of people every year.

The city has also become a major global business hub as a result of its-of-the-art infrastructure, highly developed economy and progressive open trade and economic policies. Most importantly, Dubai has a tax-free economy thus allowing its residents to enjoy a high standard of living. It is also one of the safest cities in the world and offers its residents world-class facilities in leisure, entertainment and communications.

## Dubai has Launched some of the most ambitious projects in the world including:

- Infinity, the world's first twisting tower
- Burj Khalifa, the tallest tower in the world
- The Palm, the 8th wonder of the world
- The World, a cluster of islands in the sea
- Dubailand, the most varied leisure and entertainment attraction on earth
- Dubai International Financial Center (DIFC), a world-class financial district

## Highlights of Dubai

- Dubai enjoys 9 months of cool weather and sunny skies
- 15 million tourists are expected to visit Dubai by 2020
- Dubai is a tax-free economy providing endless opportunities for business and savings
- Dubai's airport is one of the busiest airports in the world and where over 80 airlines land everyday







*Photographs courtesy of Department of Tourism and Marketing*



# DUBAI MARINA

Dubai Marina, which covers 50 million ft<sup>2</sup>, is the world's master-planned waterfront development and one of the most exclusive. Dubai Marina houses a range of residential and leisure facilities that offer its residents a stylish and sophisticated lifestyle.

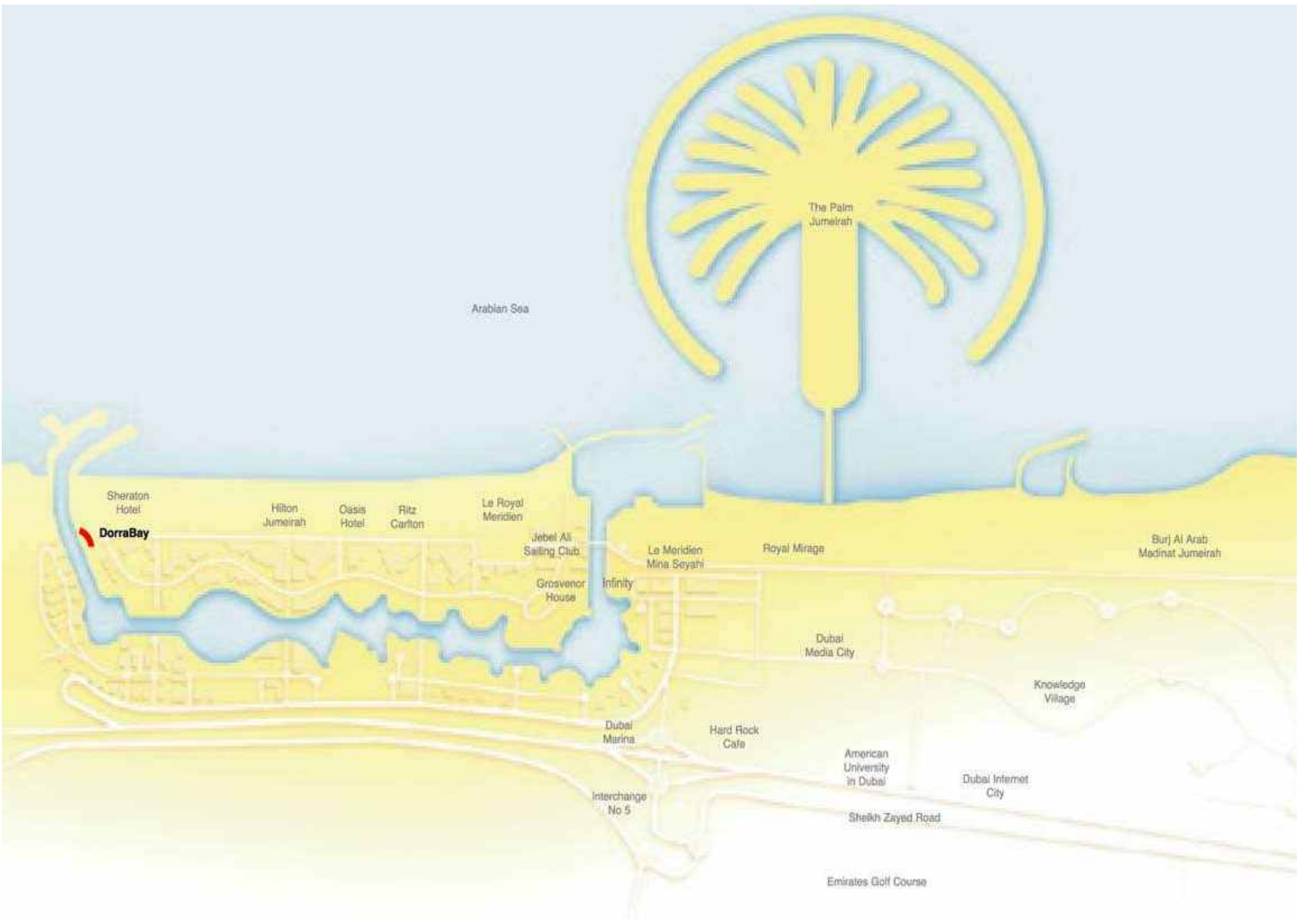
The Marina has a 9km promenade lined with parks, cafes, restaurants, retail store and boat harbours. Located near interchange 5 on Sheikh Zayed Road, the Marina is strategically located near Dubai Internet City, leading schools, universities, hospitals, international store and beachfront 5-star hotels.

- 9km promenade line up with parks, cafes, restaurants, retail store and boat harbours
- Located next to interchange 5 on Sheikh Zayed Road
- Close to 5-star hotels such as Royal Mirage, Ritz Carlton, Le Royal Meridien, Sheraton among others
- Several boat berthing facilities
- In close proximity to the 8th wonder of the world, The Palm

**Buying at Dubai Marina means buying your own freehold property. In addition, every property owner is entitled to a UAE residence visa (issued by the relevant Dubai government department under the standard terms and conditions); this is open to all home owners whether they live in Dubai or abroad.**







The Palm  
Jumeirah

Arabian Sea

Sheraton  
Hotel

**DorraBay**

Hilton  
Jumeirah

Oasis  
Hotel

Ritz  
Carlton

Le Royal  
Meridien

Jebel Ali  
Sailing Club

Grosvenor  
House

Infinity

Le Meridien  
Mina Seyahi

Royal Mirage

Burj Al Arab  
Madinat Jumeirah

Dubai  
Media City

Knowledge  
Village

American  
University  
in Dubai

Dubai Internet  
City

Hard Rock  
Cafe

Dubai  
Marina

Interchange  
No 5

Sheikh Zayed Road

Emirates Golf Course

# DORRABAY

DorraBay is a 22-storey residential tower, strategically located on the beach and marina; DorraBay offers a range of panoramic views of the Arabian Sea, Marina or boat harbors.

The tower's curved design and located at the end of the crossroad between the beach and the marina optimizes the view for all its apartments so residents enjoy a prime marina or prime sea view or both.

Spacious rooms, large balconies and lots of sunlight enhances the feeling of space and freedom inside the apartments.

Home owners can chose from a variety of units including: 1,2 and 3 bedrooms apartments, duplexes, garden terrace apartments and penthouses. Summer townhouses on the marina front are also available with a private terrace that offer exquisite views of Dubai Marina.

**Above all, DorraBay has immediate access to the white sandy beaches of the Arabia Sea.**









# THE AMENITIES

DorraBay offer its residents a plenitude of facilities to indulge in for the whole family. From swimming pools to kids play areas, gymnasiums, business centre, there is an activity for every person in the family. In addition proximity to retail store within the tower and in the vicinity add to the convenience and flexibility of living at DorraBay.

## The tower amenities include:

- Large swimming pool
- Kids swimming pool
- Lush landscape and outdoor pool/terrace
- Fully equipped state-of-the-art gymnasium
- Kids play areas
- Business centre/ lounge
- Close to retail stores within the tower and in the marina area
- In close proximity to the beach
- 24-Hour security
- Secure underground parking
- Close to boating berths









# THE INTERIORS

Every apartment provides its residents with the comforts of a luxury home on the beach.  
With a variety of unit types and sizes, residents can find the home that suits their taste.

- 22 Floors
- 1,2,3 bedroom apartments, 2,3 bedroom duplexes, 3 bedroom garden terrace apartments, penthouse and duplex villas
- Large balconies for every apartment
- Spacious rooms
- Fully equipped kitchens (including fridge, washing machine and oven)
- Built-in wardrobes in all rooms
- Access to the beach
- Basement parking
- Abundant sunlight reaching all units
- State-of-the-art air conditioning







*Over looking view*



*Fully-Fitted open style kitchen*



# BEHIND THE SCENES



“To be a Specialized and Diversified Real Estate company providing Boutique services in Real Estate Development, Sales & Leasing, Property Management.”

Palma Holding is a premier group of companies founded in 1998 in Dubai, United Arab Emirates. Palma has persevered during the tough years of 2008 – 2012, where our determination, passion and commitment to our shareholders, customers and to the dynamic city of Dubai, led us to skillfully deliver 100% of our real estate projects in excess of AED 3.6 billion (USD 1 billion); including 2 of our most iconic projects, Silverene Twin Towers in Dubai Marina (2012) and the Infinity-Cayan Tower in Dubai Marina (2013).

Palma Holding focuses on Dubai’s premium real estate areas, with an unmatched reputation for offering quality, professional service and developments.

Palma has three main divisions:

Real Estate Development | Sales & Leasing | Property Management

As one of Dubai’s long established and most successful estate agents established in 1998, we see ourselves as Dubai property experts that build strong long-term relationships with our customers. We differentiate ourselves by providing professional, personalized services to our customers.

For more information please visit our website [www.palmaholding.com](http://www.palmaholding.com)





## SOME OF OUR DEVELOPMENTS IN DUBAI MARINA



Infinity - Cayan Tower

An 80-storey residential tower that spirals 90 degrees into the sky

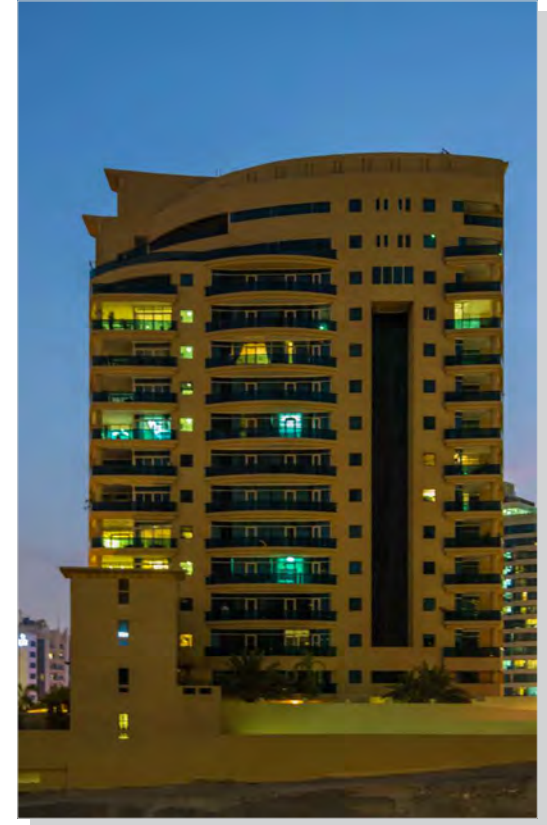
**Dubai Marina**



The Jewels Tower

A 20-storey twin-tower residential project

**Dubai Marina**



La Residencia Del Mar

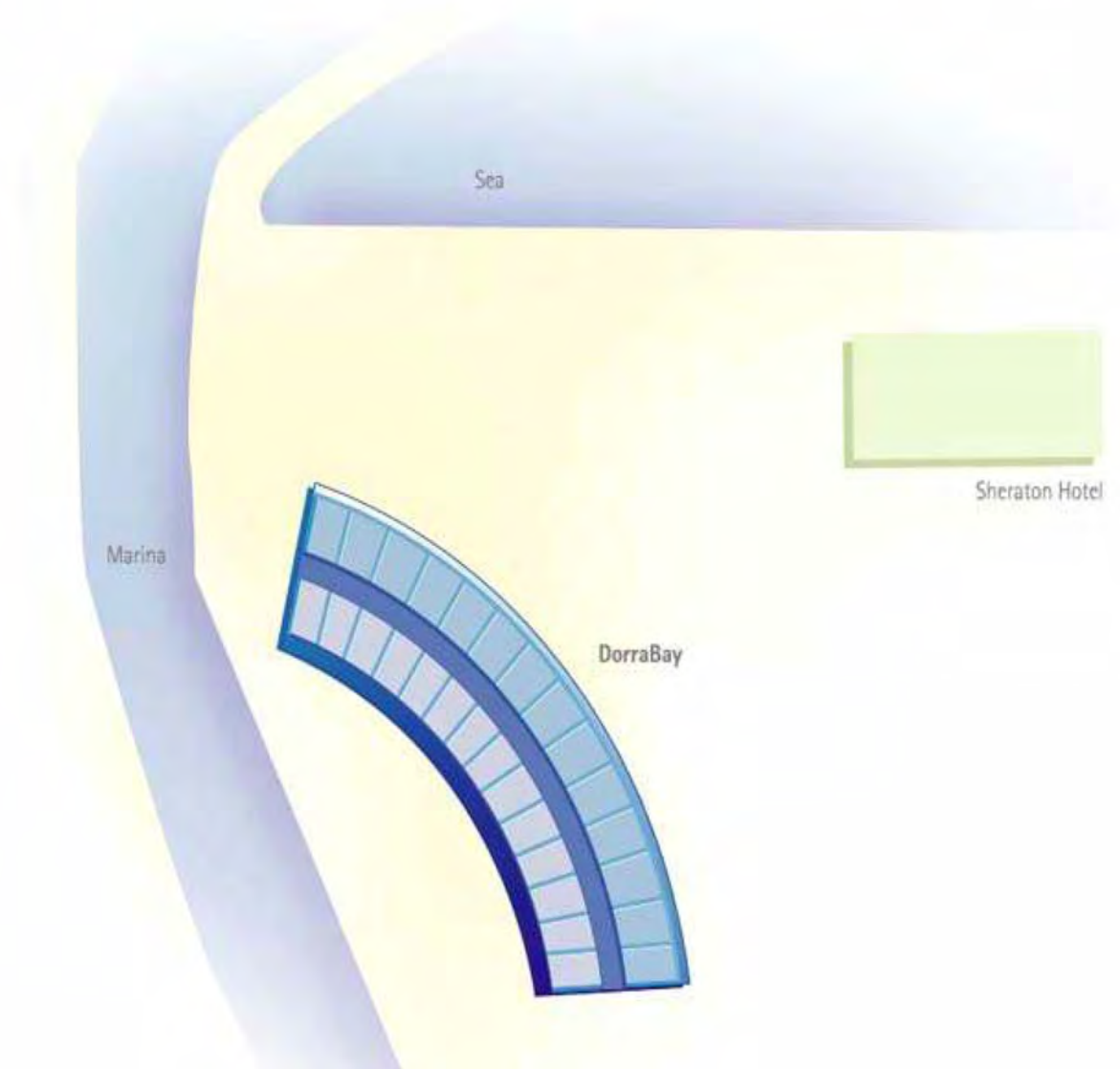
An exclusive 14-storey residential tower

**Dubai Marina**

# THE FLOOR PLANS

## DorraBay offers:

- 1 Bedroom Apartments
- 2 Bedroom Apartments
- 3 Bedroom Apartments
- 2 and 3 Bedroom Duplexes
- Garden Terrace Apartments
- Summer Townhouses
- Penthouses







ONE - BEDROOM - Type A

## LEVEL 02



1 BEDROOM

Type - A

Unit Size

94 SQ.M.



ONE - BEDROOM - Type E

## LEVEL 02



1 BEDROOM

Type - E

Unit Size

85 SQ.M.





TWO - BEDROOM - Type A

## LEVEL 05 & 06



TWO-BEDROOM

Type - A

Unit Size-

152 SQ.M.



TWO - BEDROOM - Type F

## LEVEL 09 - 12



TWO-BEDROOM

Type - F

Unit Size

131.50 M



## LEVEL 09 - 12



THREE - BEDROOM - Type C



THREE-BEDROOM

Type - C

Unit Size

176 SQ. M.



THREE - BEDROOM - Type D

## LEVEL 09 - 12



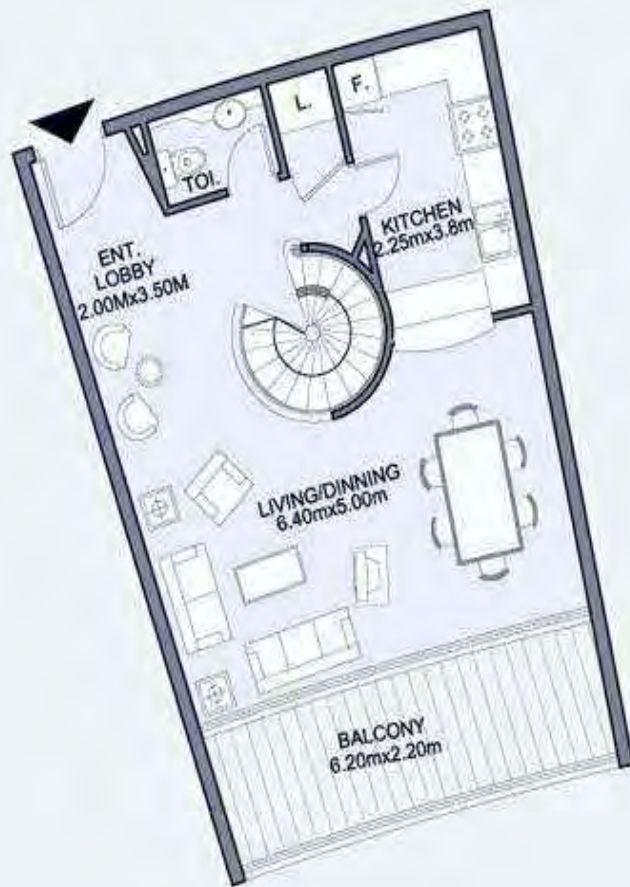
### THREE-BEDROOM

Type - D

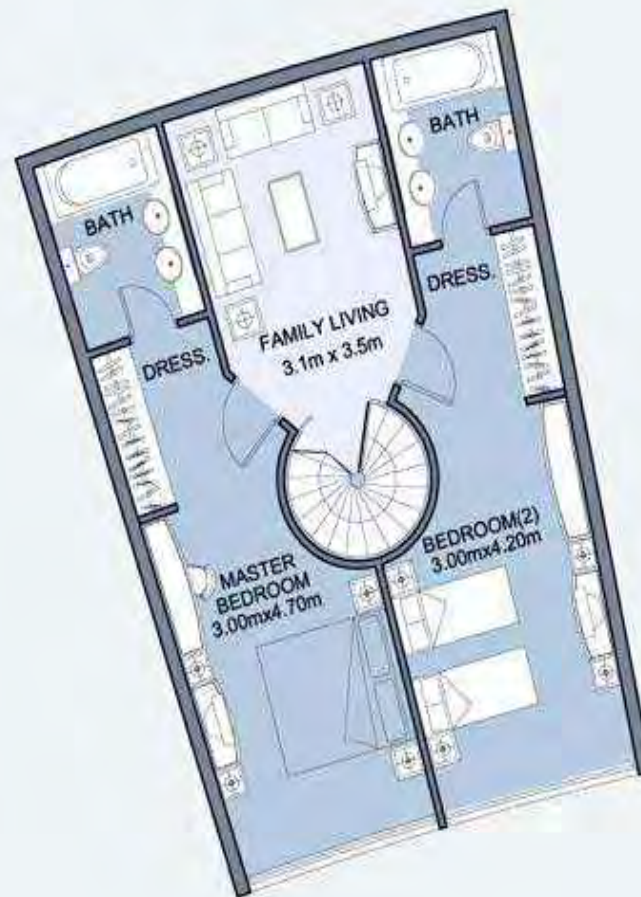
Unit Size

165 SQ.M.





LOWER LEVEL - 17TH FLOOR



UPPER LEVEL - 18TH FLOOR

## LEVEL 17 & 18



DUPLEX  
TWO-BEDROOM

Type - B

Unit Size

139 SQ.M.



DORRABAY



# LIVING ON THE BEACH

*"In every out thrust headland, in every curving beach, in every grain of sand there is the story of the earth"*

**Rachel Carson**

**Real Estate Development | Sales & Leasing | Property Management**

1st Floor, Silverene Tower B, Dubai Marina, PO Box 33668, Dubai, UAE | **T** +971 4 4522202 | **F** +971 4 4534387 | **E** [info@palmaholding.com](mailto:info@palmaholding.com)

Palma Homes Real Estate Development LLC. DN 1068 | Palma Real Estate LLC. ORN 808 | [www.palmaholding.com](http://www.palmaholding.com)

